

# SCOUT 2

CNC PORTABLE PLASMA/FLAME CUTTING MACHINE

AROBRO



**TWO CUTTING MODES  
FREE TO SWITCH**



Low Consumption



Good Structure



Efficient



Long Life

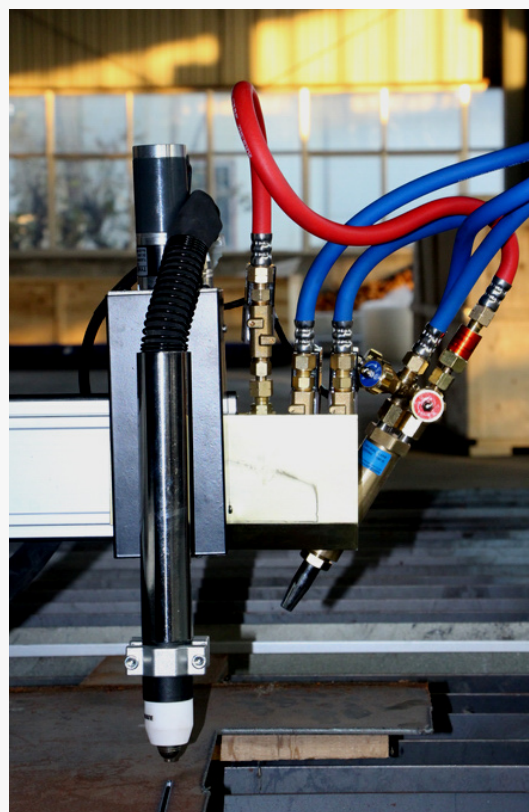
# 3 CONFIGURATIONS OPTIONAL



**A: Flame Torch**

**B: Plasma Torch**

**C: Flame & Plasma Torch**



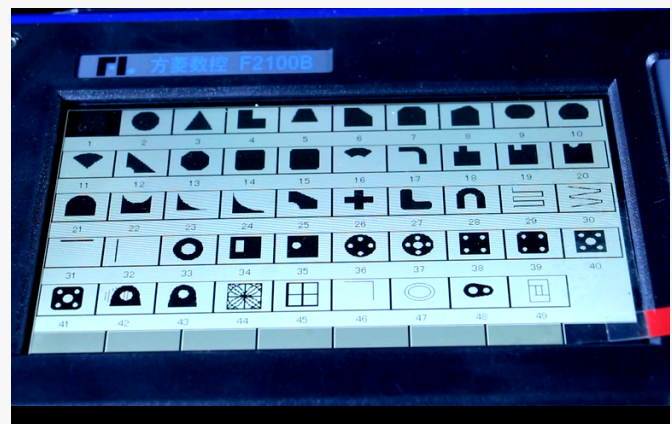
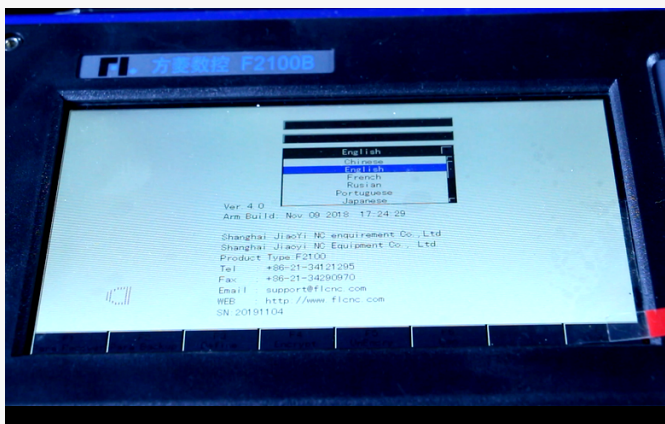


# ARC VOLTAGE CONTROLLER (AVC)



Automatic arc voltage adjustment,  
easy to operate and reliable.

## CNC SYSTEM FROM SHANGHAI FANGLING

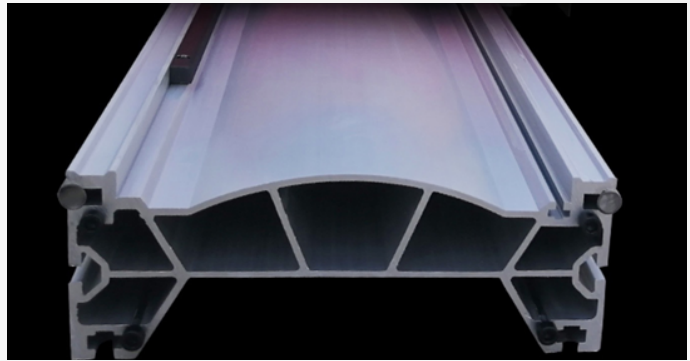


Supporting multi-language

System comes with  
multiple graphics

# MODULAR ALUMINUM BASE

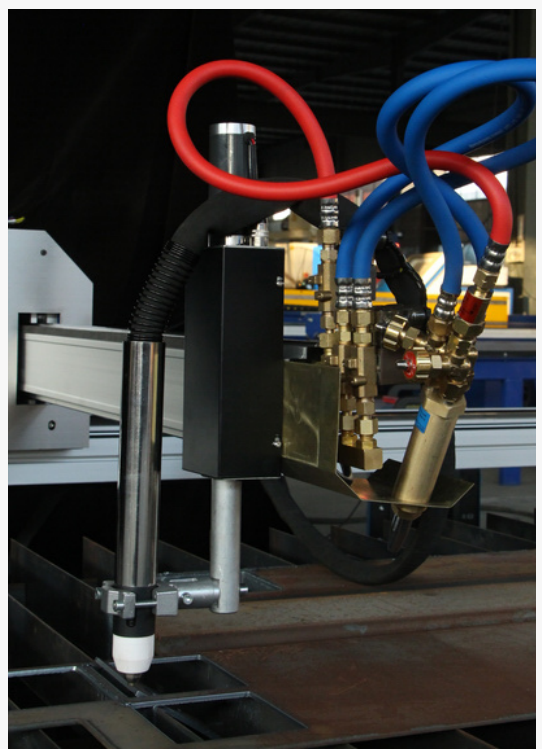
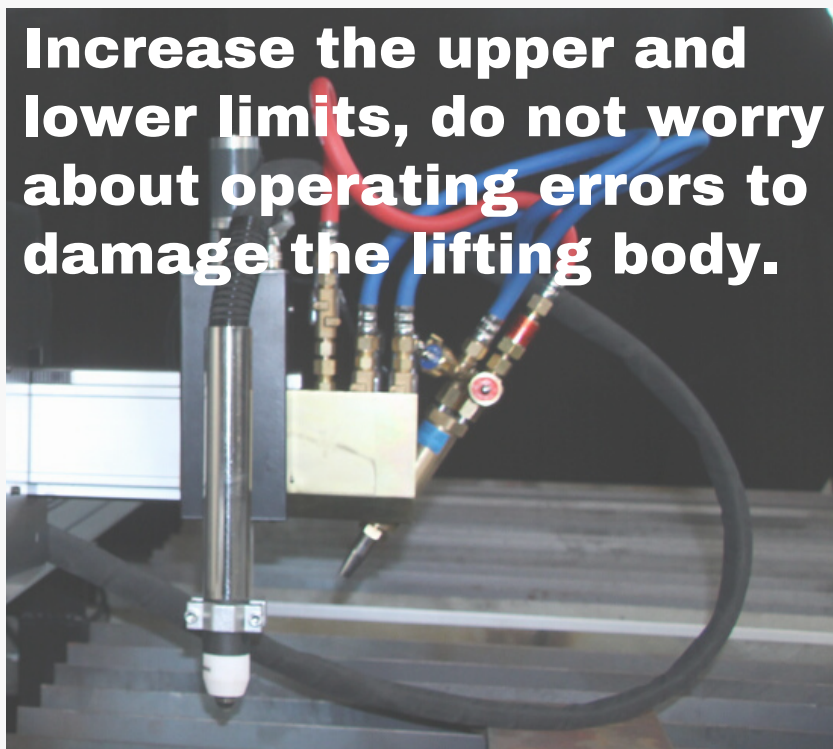
Length can be extended



One-shot die forming

## NEW LIFTER

Increase the upper and lower limits, do not worry about operating errors to damage the lifting body.



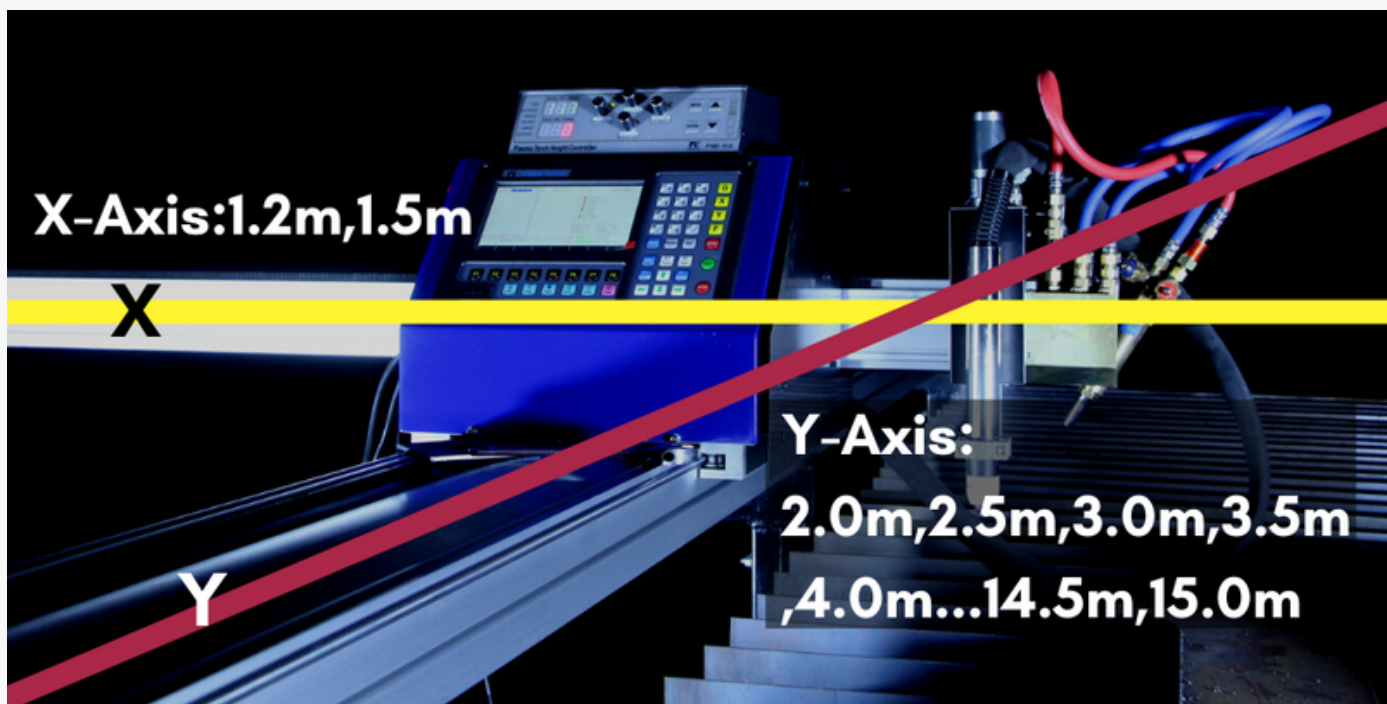


# MORE DETAILS

FACEBO



You are free to choose:



# SPECIFICATIONS

ARC BRO

Type	Scout 2
Mode of Cutting	Plasma / Flame
Input Voltage	110V/220 V
Frequency	50 Hz/60Hz
Input Power	180 W
Display	LCD 7 "
Flame Cutting Thickness	5mm — 150 mm
Plasma Cutting Thickness	Depending on the plasma power source
Flame Cutting Speed	0 —1000 mm/min
Plasma Cutting Speed	0 —4000 mm/min
Tolerance	<0.5mm
Plasma Height Control	Automatic voltage THC



**Address:** Xinfang Industrial Park, No.218, ChaoYang District, Beijing 100024, China

**Tel:** +86-10-65798995

**E-mail:** [sales@arcbro.com](mailto:sales@arcbro.com)

**Fax:** +86-10-65790867

**Http:** [//www.arcbro.com](http://www.arcbro.com)

**CONTACT US**