

How to solve CNC USB interface does not transfer—F2100S

➔ Problem: CNC USB interface does not transfer;

- Solution overview:
1. U disk and the system cant match ;
 2. The U disk in the wrong format;
 3. The system memory is already full;
 4. Different version system programs have been upgraded;

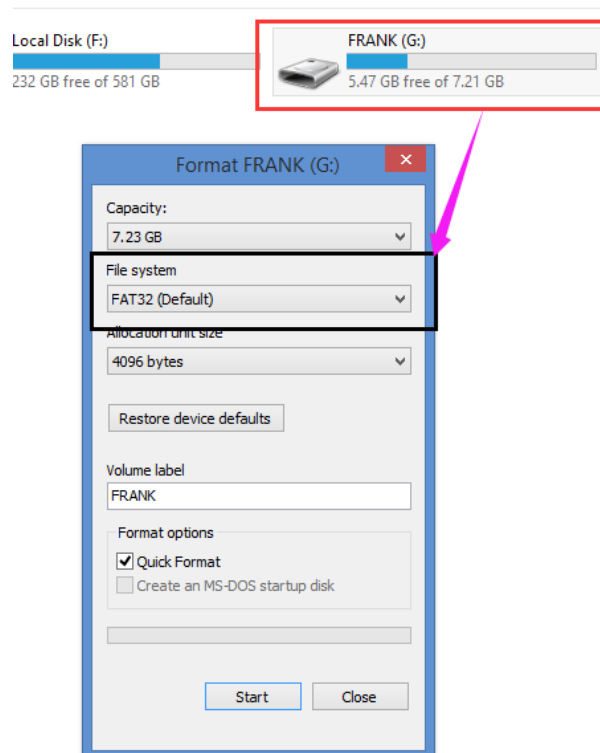
Problem analysis:

- ✳ 1. U disk and the system cant match ;

Solution: Replace the other type or brand of U disk. The U disk memory is preferably less than 16G.

- ✳ 2. The U disk in the wrong format;

Solution: Reformat for FAT format.

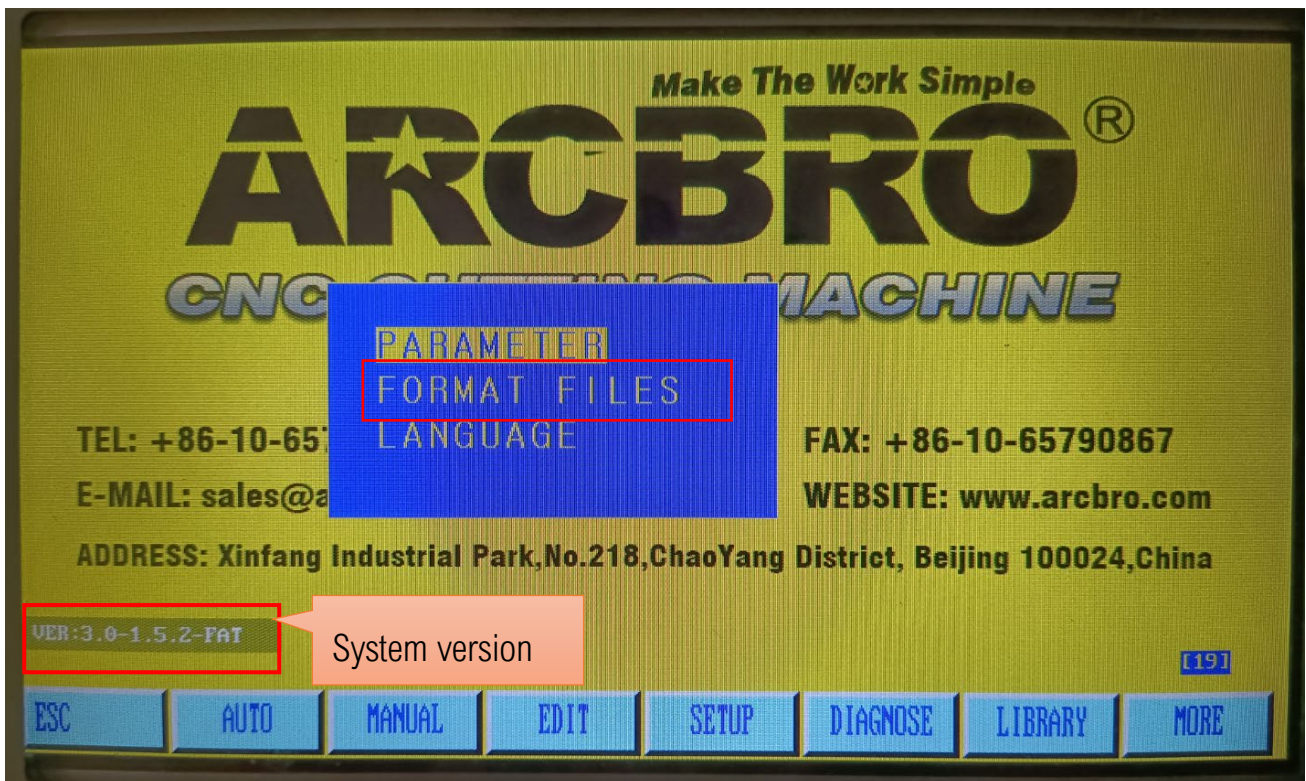


Service Support Spirit

✦ 3. The system memory is already full;

Solution: File formatting; In the main interface, then press **【G】【G】【3】**, and you will see next picture, please choose the **【FORMAT FILE】**, press “ENTER” key.

When file format is finished, then disconnect the power supply restart the machine. Try to test it again.



✦ 4. Different version system programs have been upgraded

Solution: Provide a system version, Then upgrade system.