

Service Support Spirit

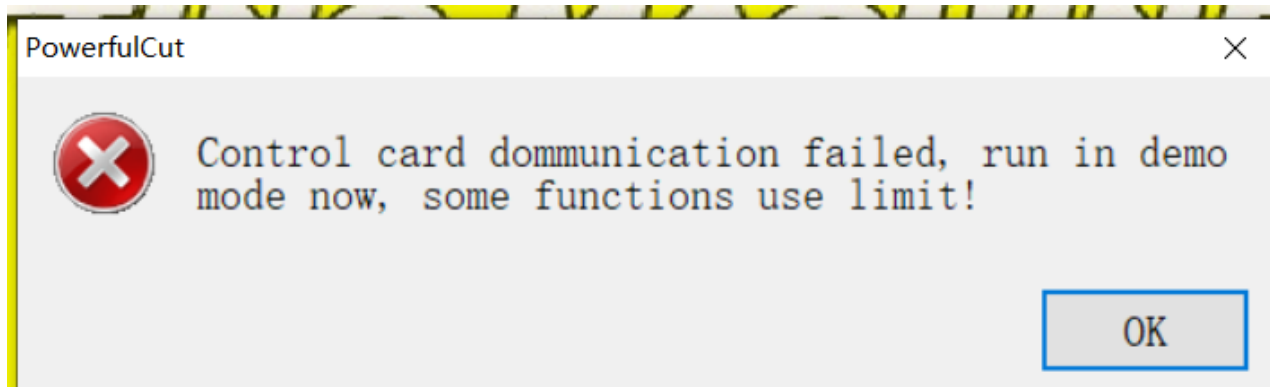
How to solve Control card communication failed—IPC100

→ Problem: Control card communication failed;

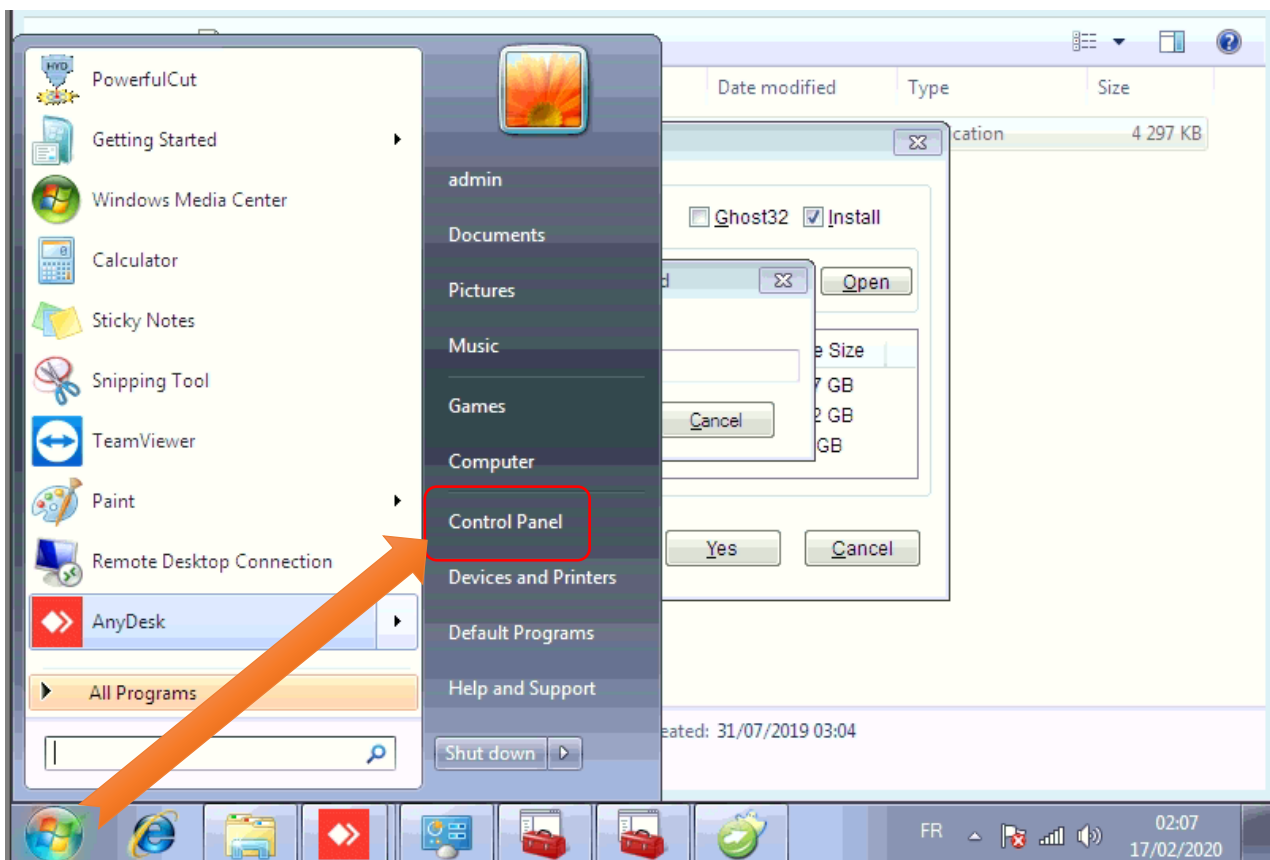
Solution overview: 1. Modify the CNC system IP address;

Problem analysis:

✳ Control card communication failed;



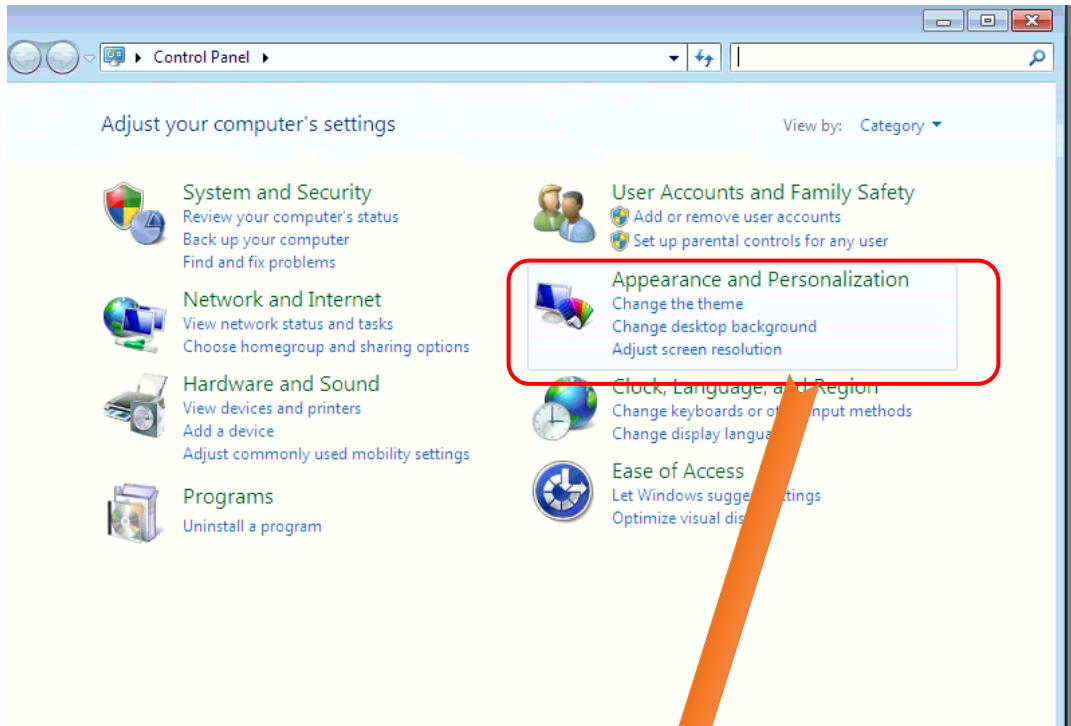
↳ Solution: 1/5- - Click on **【Start】** → Click on **【Control Panel】** into next



Pic1

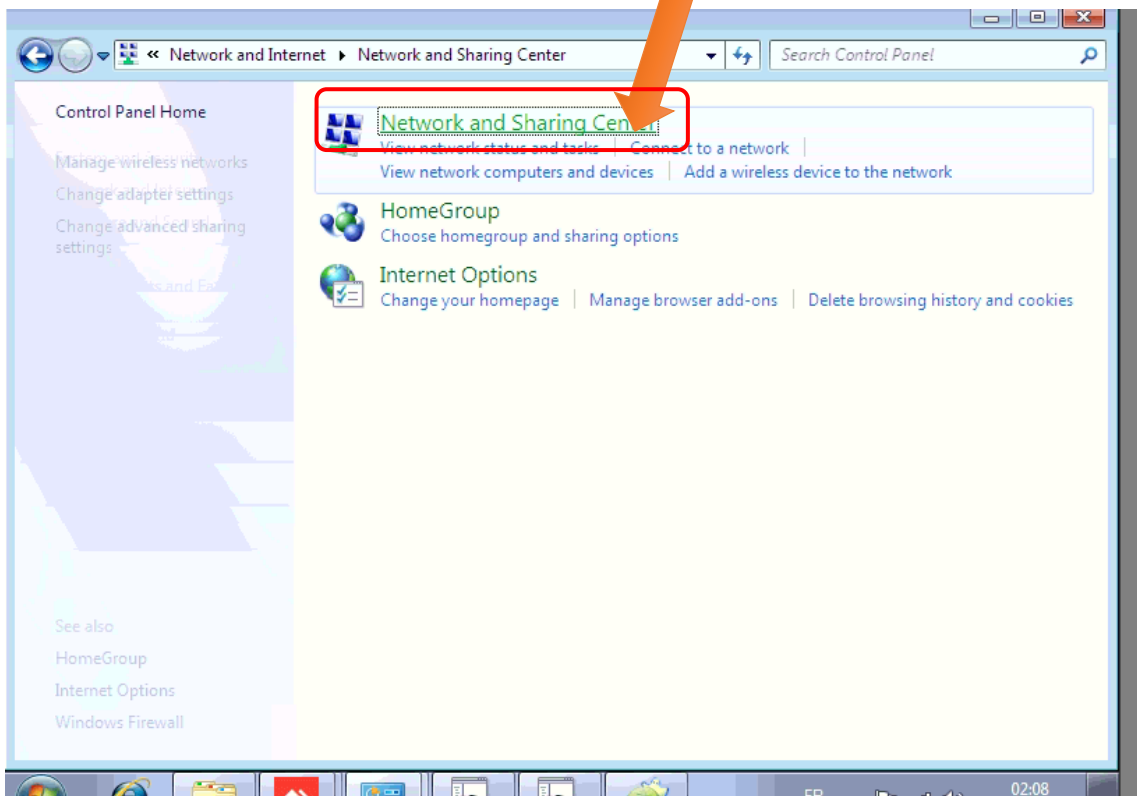
Service Support Spirit

↪ 2/5- - In control panel interface → Click on **【Appearance and Personalization】** → into next



Pic2

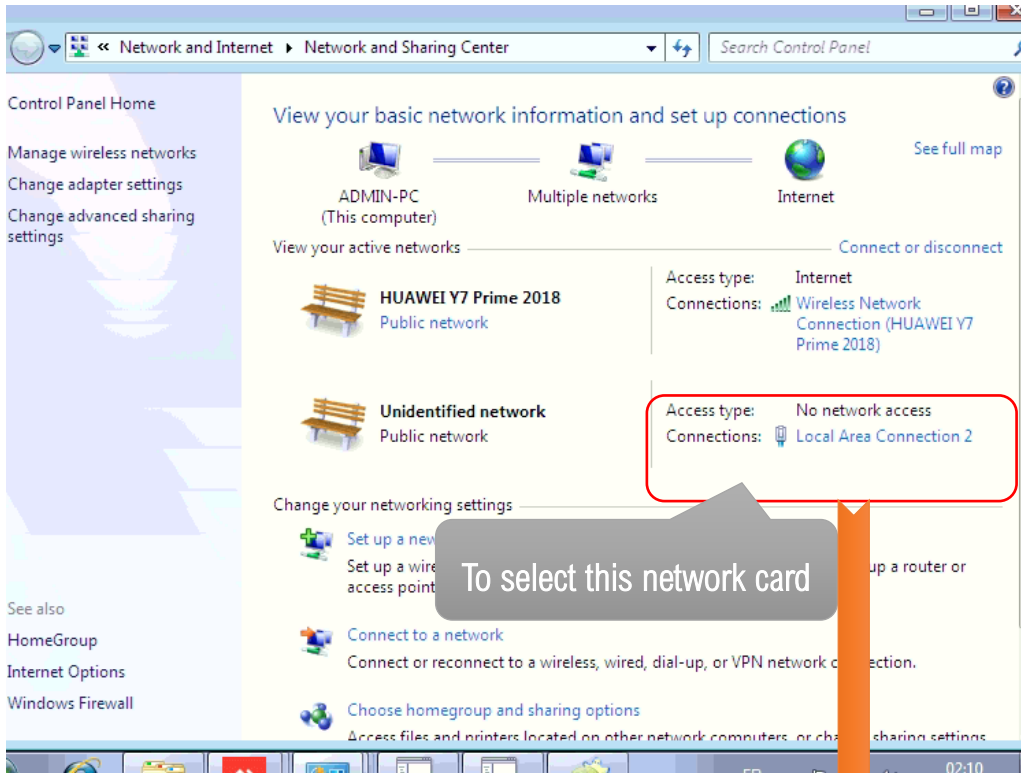
↪ 3/5- -Click on **【Network】** → into next



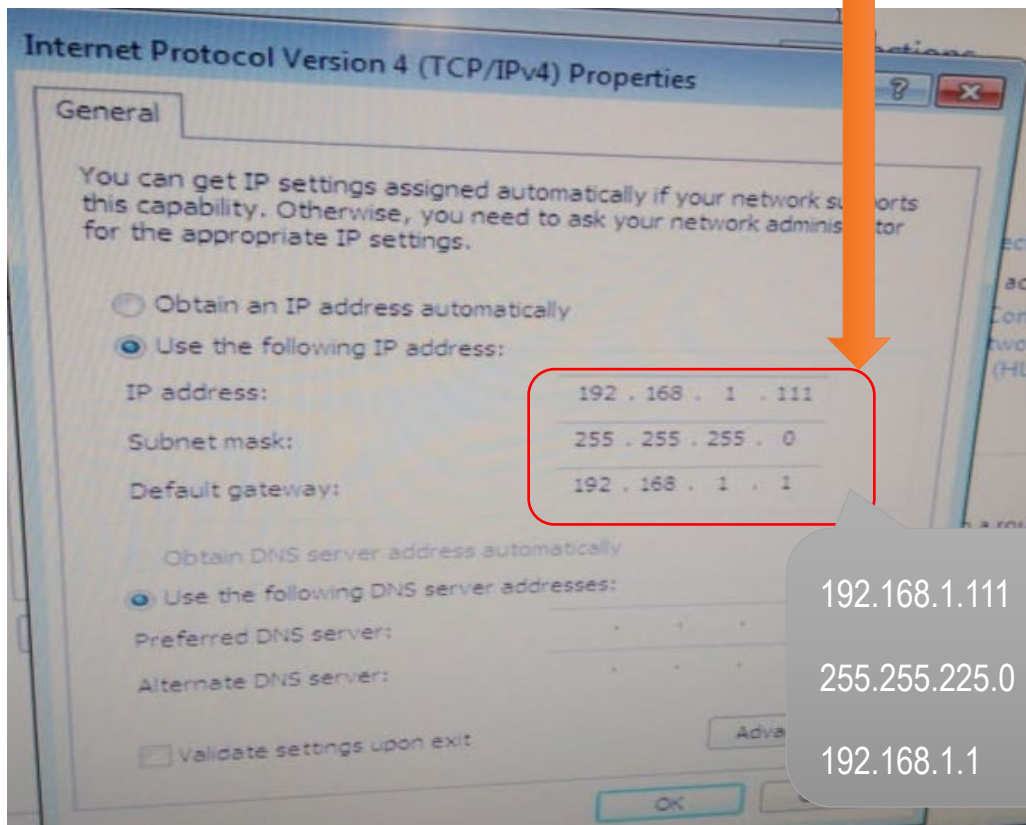
Pic3

Service Support Spirit

4/5- -Click on **Local Area Connection** → into next



5/5- -Modify IP address → Click on OK; Restart cnc system;



Pic5