

How to solve Screen Display-black screen—F2100S

→ Problem: Black Screen or Fault of screen;

Solution overview: 1. Power supply and Wiring problem;

Problem analysis:

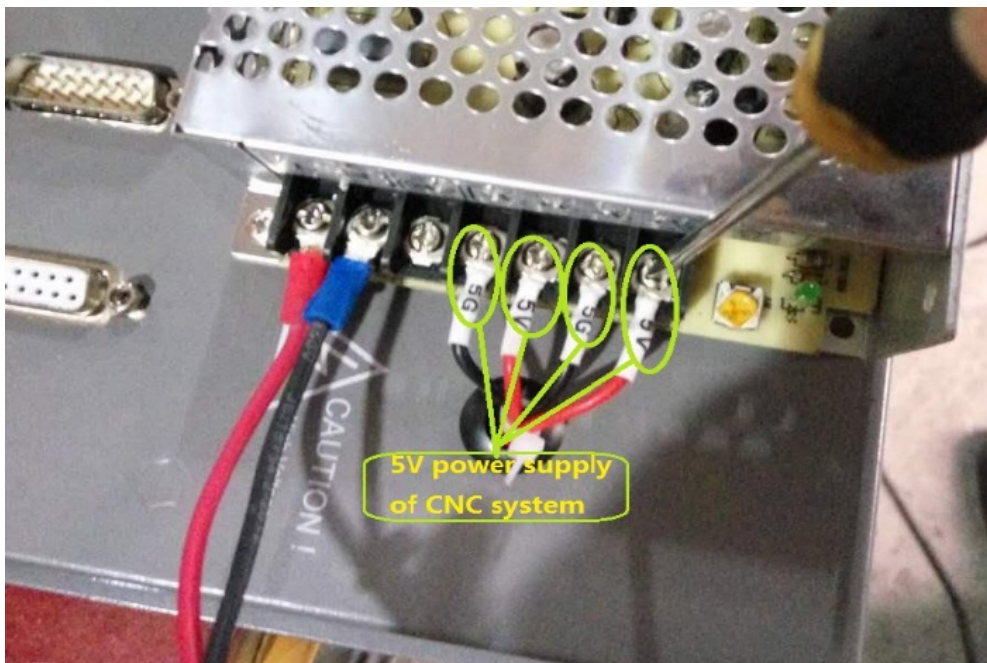
✳ 1. Power supply and Wiring;

Solution: Step 1-Take off the screws of the system box and open it.

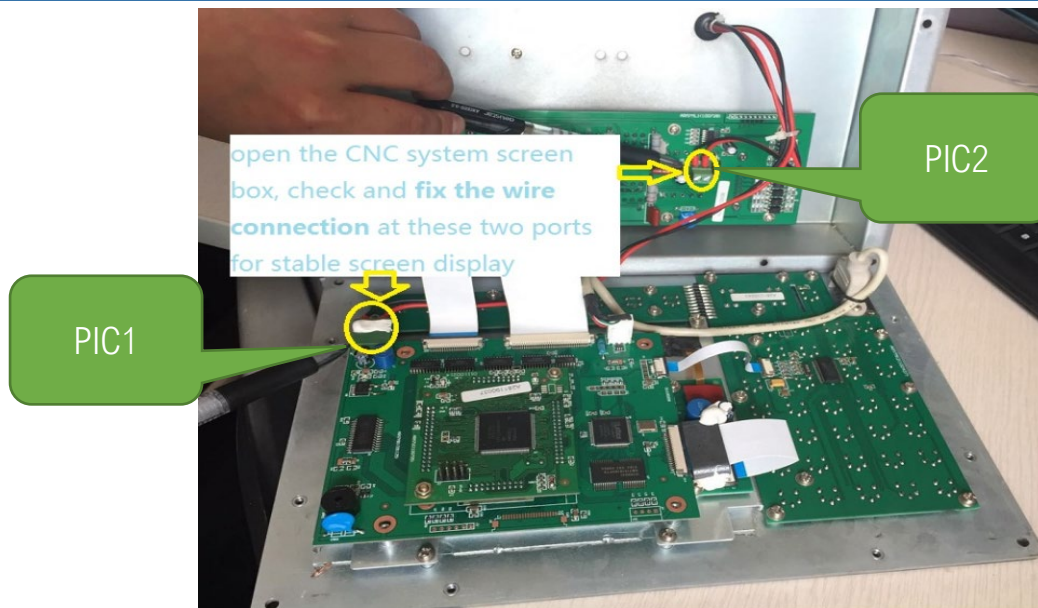
Step 2-Release each port of the (5V) power supply wires.

Check each wire by multimeter to figure out if it is in good working condition;

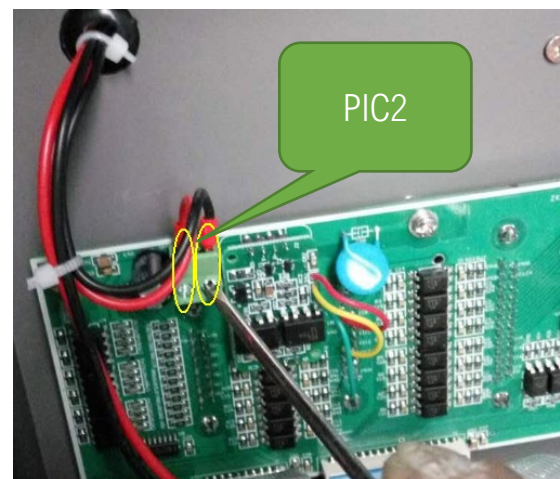
Check each port by multimeter to figure out if it is in good working condition.



Replace if there is any fault one. And fix all wires onto their corresponding ports.

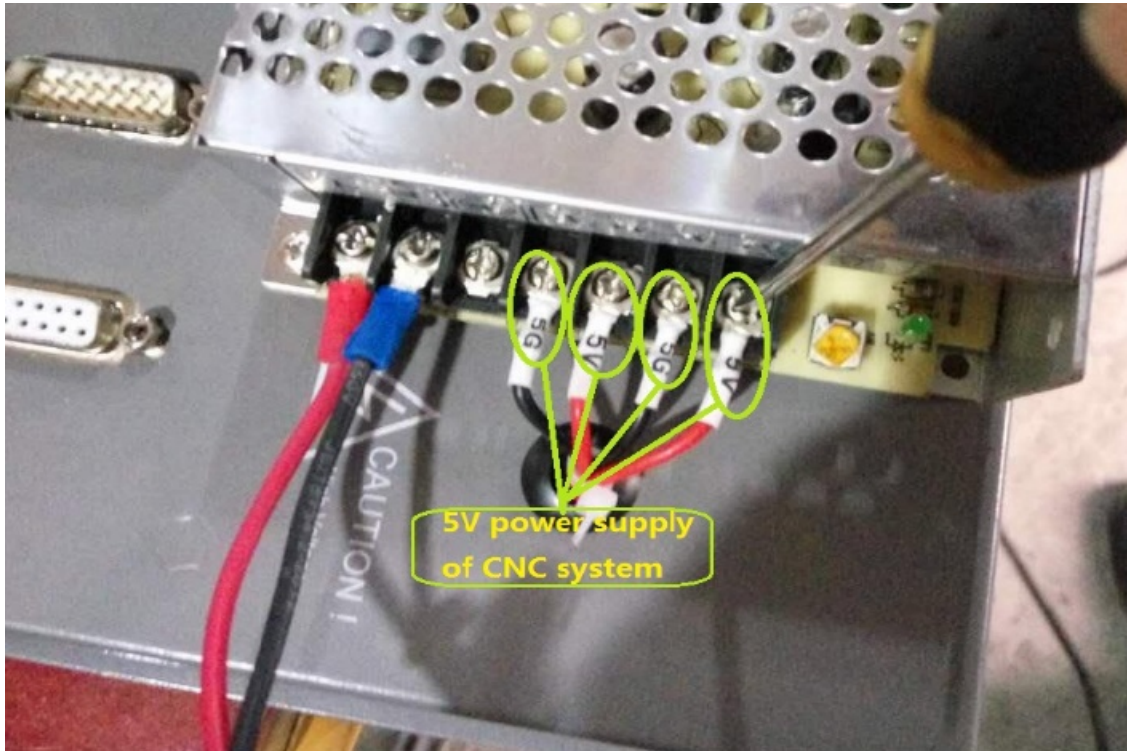


Details:



Step 3- Close the system box and fix the screws of the system box.

Step 4- Check its 5V power supply wires and ports on its back :



Replace if there is any fault one. And fix all wires onto their corresponding ports.

Double fix the screw of each connections with hot melt glue if possible.