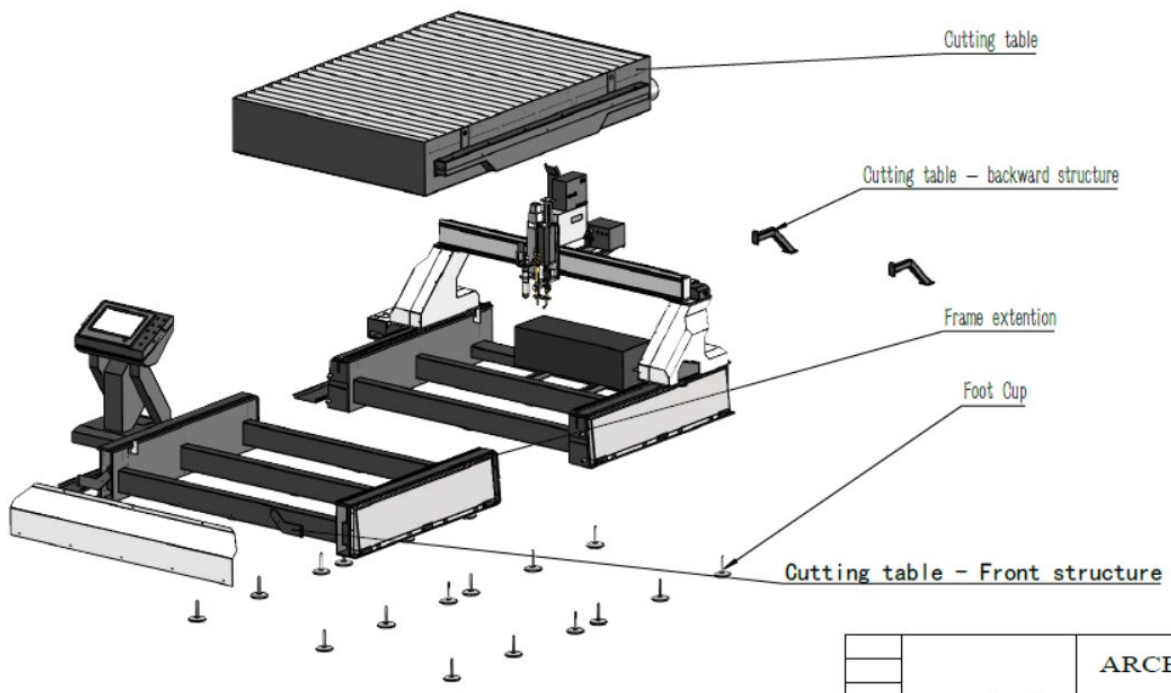


X Mark Mechanical Assembly

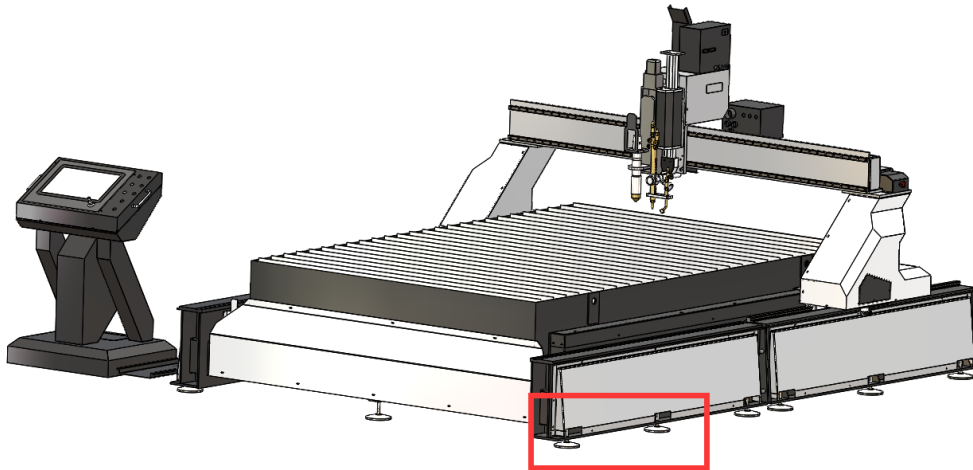
1. Whole Machine Overview



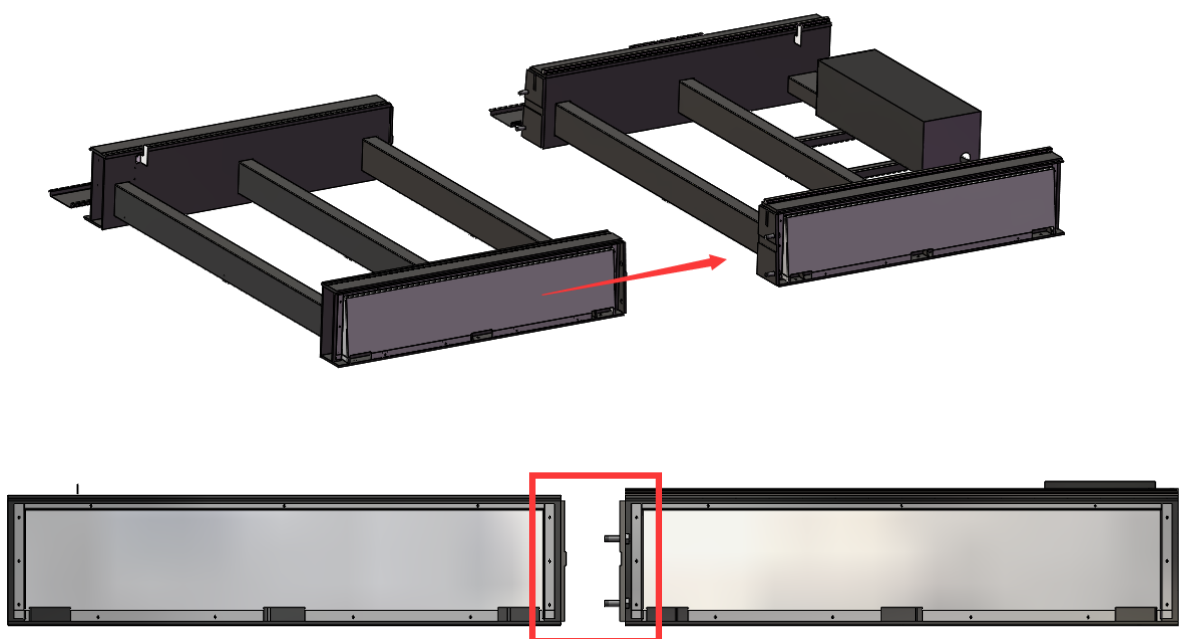
2. Parts description



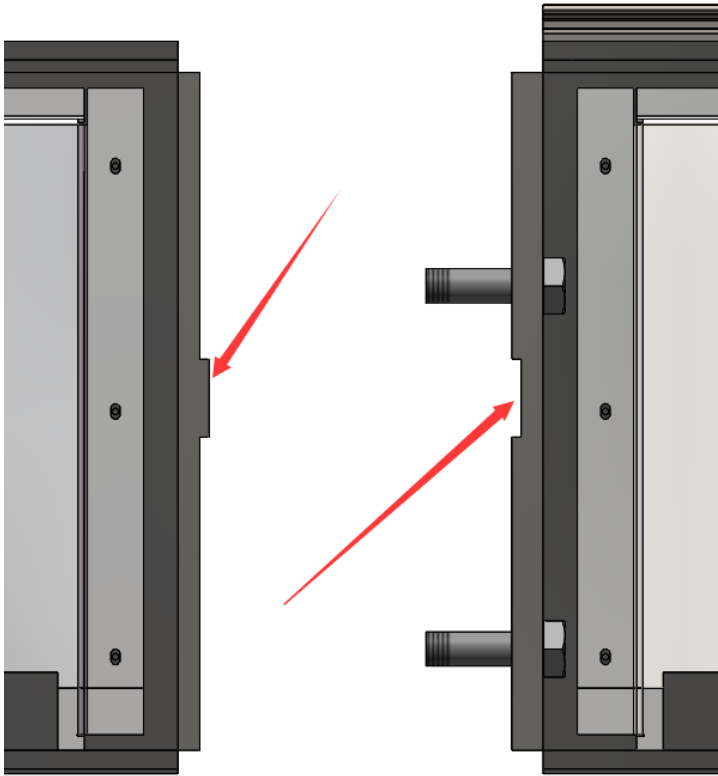
3. Check foot cups
- a) Machine has foot cups screwed under main frame.
- b) Make sure all foot cups touch floor directly.



4. Frame connection and Leveling
- a) There are two frame parts
- b) The frame connection must be done, before set up the cutting table.
- c) From the machining surface assembly, the frame will be perfect leveled.

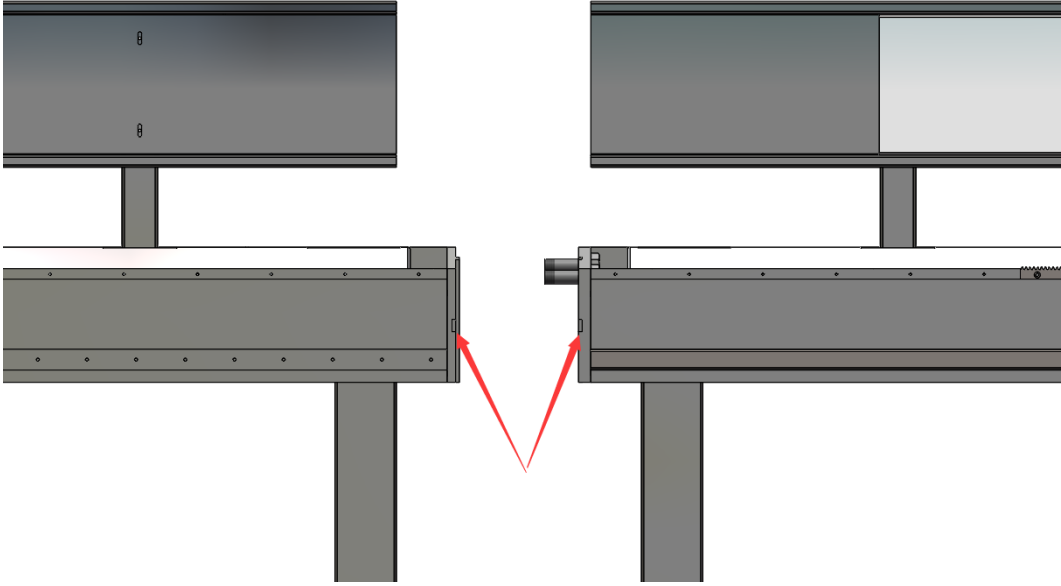


d) Connect the part shown in picture bellow:



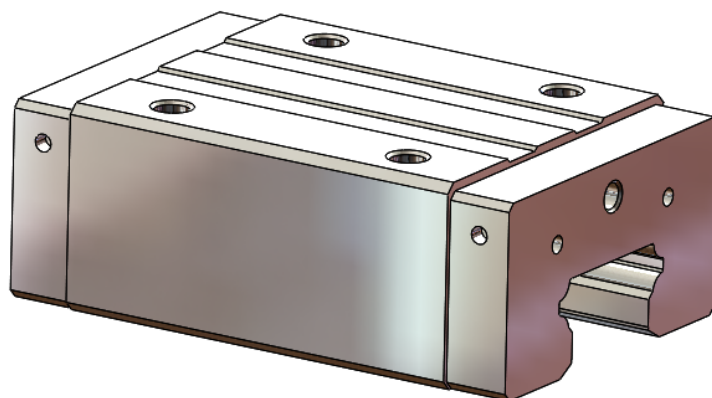
Side View

e) After the leveling, the vertical connection needs to be done as well.

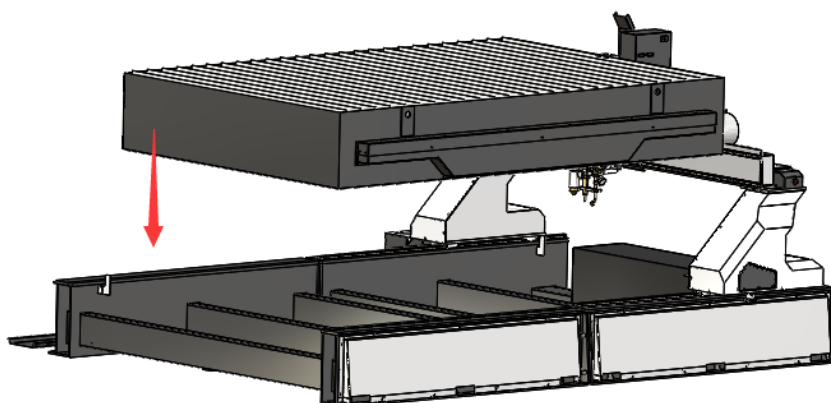


Top View

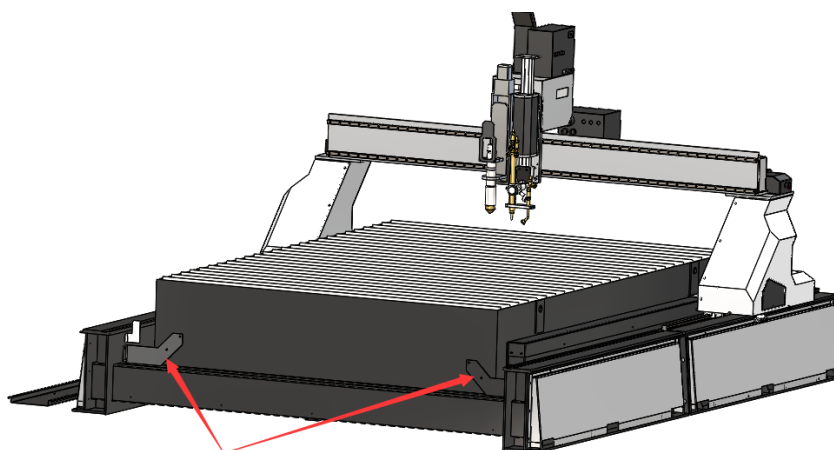
- f) Please check the square rails assembly accuracy, according to the sliding of the blocks.



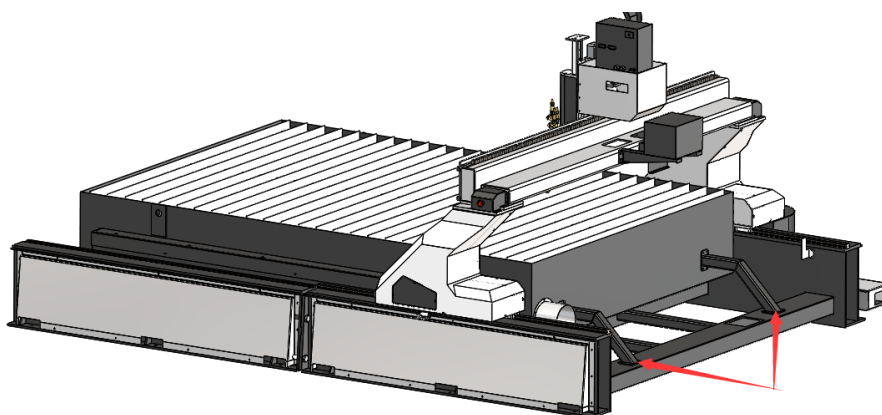
5. Set up the cutting table on the top of the frame after frame assembly



6. The cutting table can be positioned base on the front and back structure.

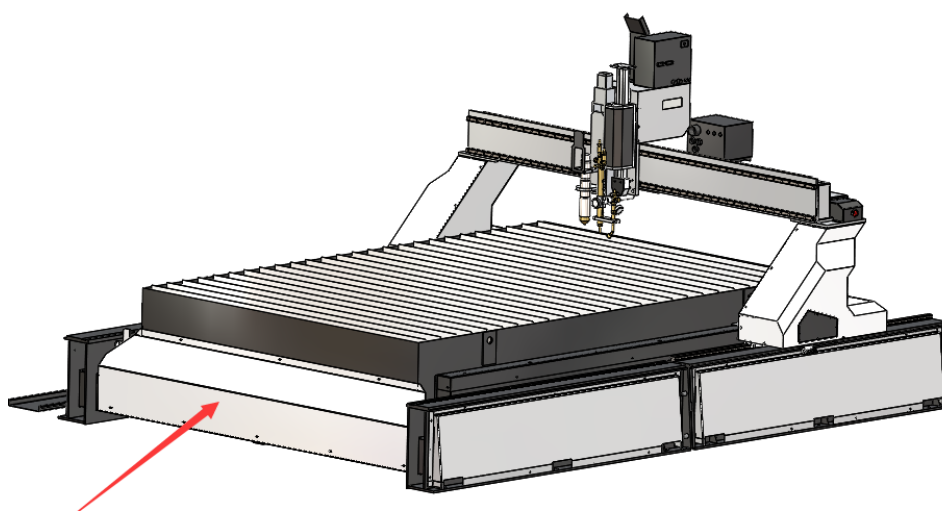


Front structure



Back structure

7. Lastly, put on the front plate.



8. Check the 3D assembly video